

Connecting to a Wi-Fi Network Tutorial #18



™ Wireless Fidelity (Wi-Fi) allows the user to connect to an Internet network on a mobile device without being physically connected to the network. The mobile device must be located in a Wi-Fi access point called a “hotspot.” Furthermore, the device must be capable of Wi-Fi service. Now a days, almost all devices such as laptop, phones or gaming device are capable of Wi-Fi.

Currently, there has been a trend for business and Government agencies to offer Wi-Fi service in their place of business. Some networks require a password to enter and this is called a secured network. Unsecured Wireless Networks require no password.

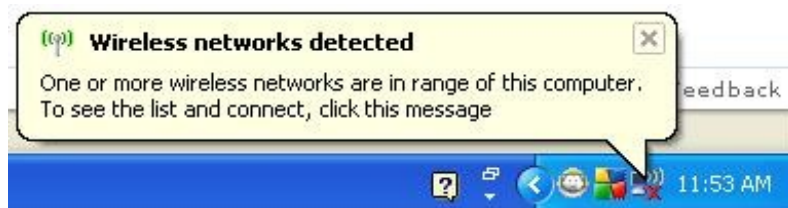
If you have high speed Internet, a modem, a wireless router and a mobile device you can set up your own Wi-Fi network at home. Many printers now a days have Wi-Fi capabilities. This means that you can print anything on any portable device without being physically connected to the printer.

Connecting to a Wi-Fi Network on a Laptop

Most times connecting to a Wi-Fi network is very simple. Most devices notice that there is an unsecured wireless network in its range where it will connect to it right away.

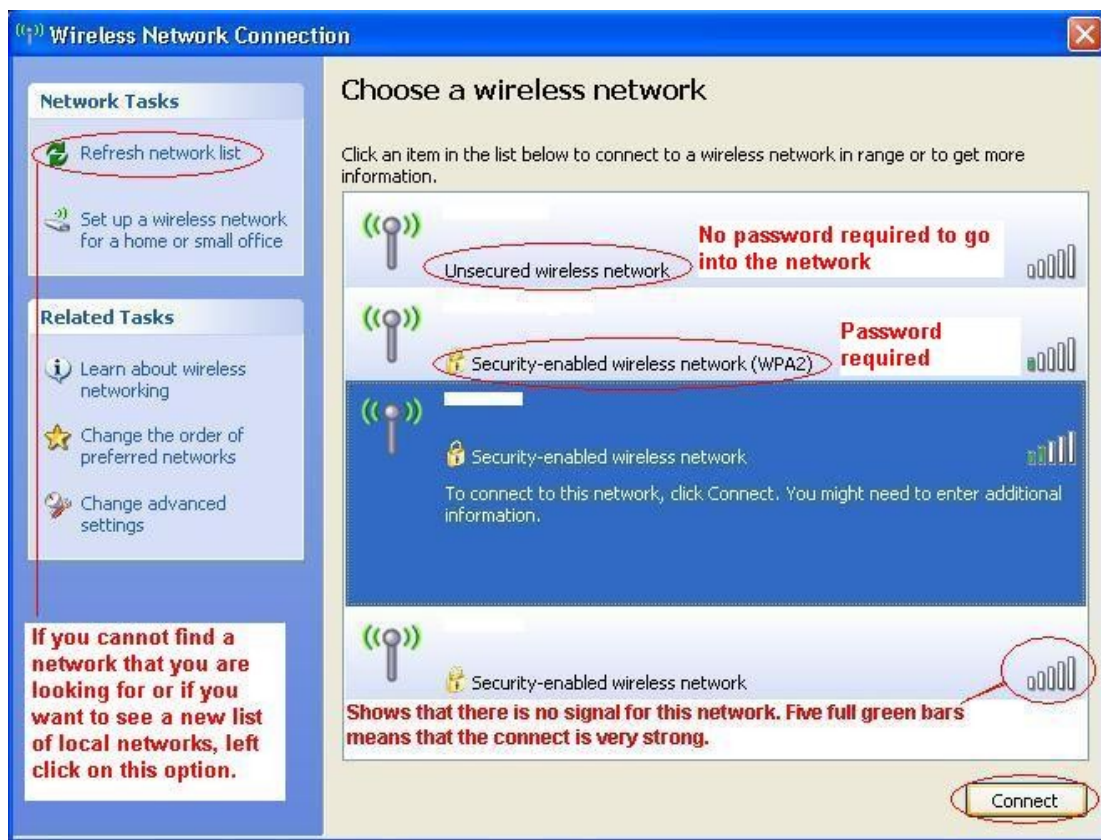
If the computer does not connect to the Wi-Fi network, you must:

- (1) Left click on the “Wireless Networks Detected” box or the “Wireless Network Connection” icon located in the bar at the bottom of your desktop



- (2) Left click on the desired Wi-Fi Network
- (3) Left click on “connect”

Note: For more information about Wireless Network Connection, look at the image provided on the next page:



Safety on a Wi-Fi Network

There are many safety precautions to be aware of whenever using a Wi-Fi Network because all your passwords and information can be seen by a hacker with the help of a special program. Here are a few things you should do whenever using Wi-Fi:

- **Use a FireWall**
- **Update your Anti-Virus**
- **Do not type in credit card numbers or passwords:** if a website begins with “https” this means that your user ids and passwords will be safe and secure from hackers. However, use this with discretion
- **Connect to known networks:** beware of connecting to scam Evil-Twin accounts
- **When not in use, disconnect from the network**